



# TeleMessage SMPP Gateway Manual

**Confidential**  
**Version: 1.4**

Version Control Information:

Version	Date	Author	Changes
1.0	01- Feb - 2008	Doron Perl + Yossi Sh	First draft
1.1	13- Feb - 2008	Yossi Sh	Update IP details
1.2	01- Nov - 2008	Liona Goldberg	Change enquire_link policy
1.3	11- Jan – 2009	Dangoor Ofer	General formatting
1.4	24 – Feb – 2011	Dangoor Ofer	General
1.5	18-June-2014	Liona Goldberg	Update IPs

# Table of Contents

<b>1. INTRODUCTION GENERAL .....</b>	<b>2</b>
A. PURPOSE.....	2
B. OBJECTIVE OF THIS DOCUMENT .....	2
C. GLOSSARY.....	3
D. REFERENCES .....	3
<b>2. CONNECTING TO THE SERVICE.....</b>	<b>4</b>
A. BASIC PARAMETERS .....	4
B. ENQUIRE_LINK .....	4
C. SUBMIT A MESSAGE .....	5
D. CONNECTIVITY .....	5
<b>3. INTEGRATION INFORMATION.....</b>	<b>6</b>
E. OVERVIEW AND PROJECT.....	6
F. CONTACT PEOPLE.....	6
G. CONNECTIONS DATA .....	7
1) <i>Accounts data</i> .....	7
2) <i>Technical Data</i> .....	7
3) <i>ESME Data</i> .....	8

## 1. Introduction General

### A. Purpose

- B. The attached document should help understand the settings and needs to establish SMS connection between the TeleMessage Gateway and a client.

This document assumes a level of familiarity with SMPP functionality, and follows the SMPP v3.4 specification.

For further assistance please contact your sales/project manager.

### C. Objective of this Document

This document is meant to outline, the requirements from the service provides/mobile operator technical connectivity of SMS to the TeleMessage system. This connectivity is used receiving SMS messages from the network to the TeleMessage system.

The connection settings explained here are based on connectivity using the SMPP protocol.

Please note that connectivity using other protocols is possible as well - for further assistance please contact your sales/project manager.

D. Glossary

<b>Name</b>	<b>Value</b>
ESME	External Short Message Entity
PDU	Protocol data unit
SMPP	Short Message Peer to Peer Protocol
SMSC	Short Message Service Center

E. References

<b>Document Name</b>	<b>Version</b>
Short Message Peer to Peer Protocol Specification	v3.4 – Issue 1.2
Requirements for VPN connection ver x.x - Production.doc	v2.4

## 2. Connecting to the Service

### A. Basic Parameters

In order to connect to the service, the following data is needed:

- IP Address and Port: This is the TCP/IP endpoint on which the ESME should connect to. (Section 3-C1)
- system\_id : This is the username of your account configured on the platform. (Section 3-C1)
- password: Password for the above account. (Section 3-C1)
- service type : distinguish the account type for the others on the platform. Not always mandatory and depended on the project scope. (Section 3-C2)

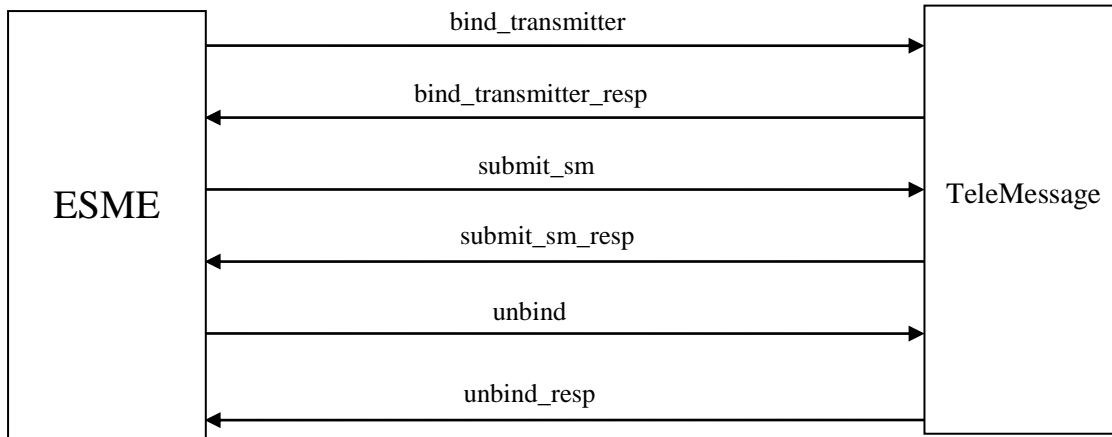
### B. enquire\_link

The application should issue an enquire\_link every 30 seconds (recommended). This will ensure the link stays active even when it is not in use.

### C. Submit a Message

Messages should be submitted with `submit_sm`, using either the `short_message` or `message_payload` fields.

The following diagram illustrates a typical SMPP request/response sequence between an SMSC and an ESME bound as a Transmitter.



### D. Connectivity

Establishing a VPN connection between the client and the platform is highly recommended.

For further information please refer to the TeleMessage document *Requirements for VPN connection ver x.x - Production.doc*

### 3. Integration information

#### E. Overview and project

This section will detail the different settings needed to establish the connection.

<b>Data Required</b>	<b>Customer Information</b>
Customer Name	

#### F. Contact People

##### **Business Contact**

<b>Data Required</b>	<b>Customer Information</b>
Business Contact Name	
Business Contact Phone Number	
Business Contact E-mail Address	

##### **Technical Contact**

<b>Data Required</b>	<b>Customer Information</b>
Technical Contact Name	
Technical Contact Phone Number	
Technical Contact E-mail Address	

## G. Connections data

### 1) Accounts data

TeleMessage will be the Server (Receiver) side. The client should be opening the connections:

Item	Type	IP	Port	System_Id	Password*
Production	Receivers Used for incoming VPN encrypted traffic for SMPP	64.28.80.120 70.36.25.70			
	Receivers Used for incoming traffic for SMPP (not encrypted)	64.28.80.126 70.36.25.71			
Test	Receiver 1	213.8.76.10			
	Receiver 2				

### 2) Technical Data

Item No.	Parameter	Option or Value	Explanation
1.	Source type /category (Service_type)	SMPP	Source type is service type in Submit_SM PDU.
2.	SMPP Version	3.4	
3.	Type of Connection	1. VPN secured connection 2. Over the Internet (only for testing phase)	
4.	SMSC default Alphabet (charset)	iso8859-1	
	Enquire Link		
5.	SMSC enquire_link policy	When ESME does not send any PDU within an interval.	
6.	What is the SMSC enquire_link interval (seconds)?	30	Configurable



### 3) ESME Data

Item No.	Parameter	Option or Value	Explanation
1	ESME IP addresses Production		
2	ESME IP addresses Test		

---